

FANUC Robot M-410*i*C



FEATURES

- M-410*i*C is an intelligent palletizing robot which contributes for robotization of palletizing system.
- Suitable robot models can be selected according with the work pieces.
 - M-410*i*C/110 Payload 110kg
 - M-410*i*C/185 Payload 185kg
 - M-410*i*C/315 Payload 315kg
 - M-410*i*C/500 Payload 500kg
- M-410*i*C/110 has a compact body and high throughput.
- M-410*i*C/185, /315 and /500 support two types of base.

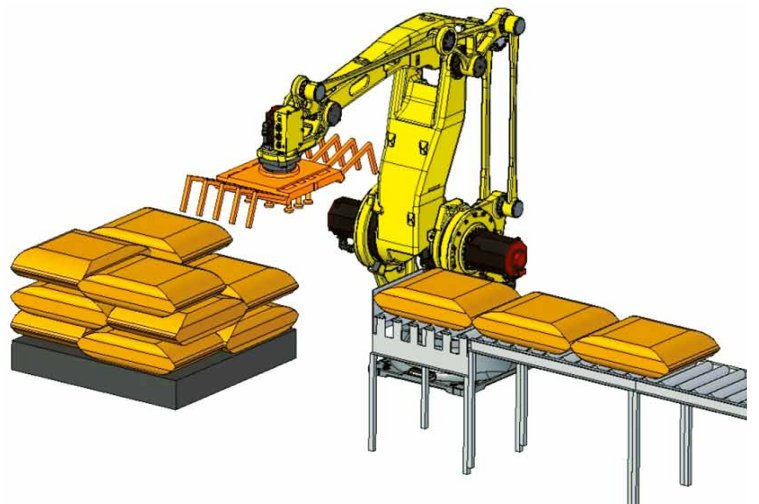
Pedestal type base :
The controller can be placed under the pedestal. It eliminates cabling at installation, and saves the installation space.

Compact base :
The base minimizes the robot maximum height. It is suitable for low ceiling location, or for integration into a manufacturing system.
- M-410*i*C/185, /315 and /500 have the hollow wrist that enables easy wiring to a gripper.
- Advanced intelligent functions are available as an option, such as *i*RVision (integrated vision) .

Application Examples

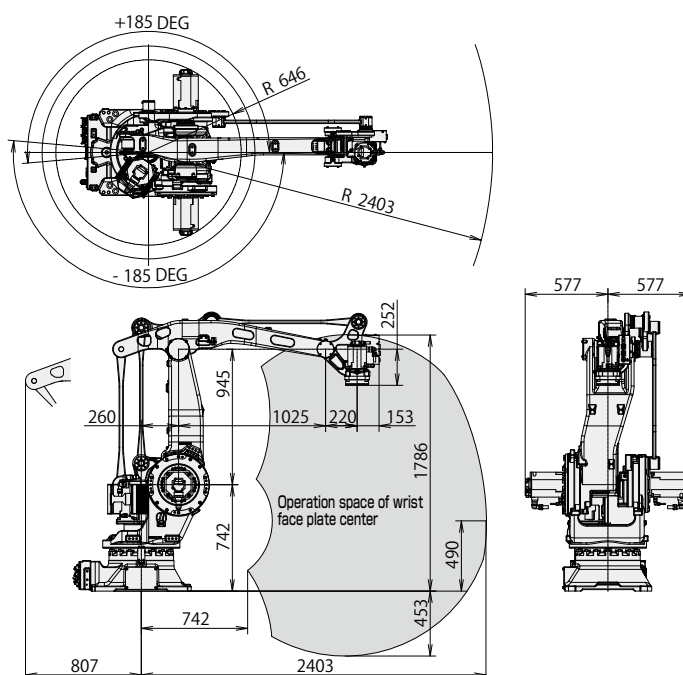


Boxes Palletizing



Bags Palletizing

M-410iC/110



Specifications

| | | |
|---|------------------------|--|
| Model | | M-410iC/110 |
| Type | | Articulated Type |
| Controlled axes | | 4 axes (J1,J2,J3,J4) |
| Reach | | 2403 mm |
| Installation | | Floor |
| Motion range (Maximum speed) (Note 1) | J1 axis rotation | 370° (145°/s) 6.46 rad (2.53 rad/s) |
| | J2 axis rotation | 125° (130°/s) 2.18 rad (2.27 rad/s) |
| | J3 axis rotation | 140° (140°/s) 2.44 rad (2.44 rad/s) |
| | J4 axis wrist rotation | 720° (420°/s) 12.57 rad (7.33 rad/s) |
| Max. load capacity at wrist | | 110 kg |
| Max. load capacity at J2 base | | 550 kg |
| Max. load capacity at J3 arm (Note 2) | | 30 kg |
| Allowable load inertia at wrist | | 53 kg·m ² 540 kgf·cm·s ² |
| Drive method | | Electric servo drive by AC servo motor |
| Repeatability (Note 3) | | ± 0.05 mm |
| Mass | | 1030 kg (Note 4) |
| Installation environment | | Ambient temperature : 0 to 45°C Ambient humidity : Normally 75%RH or less (No dew, nor frost allowed) Short term Max. 95%RH or less (within one month) Vibration acceleration : 4.9 m/s ² (0.5G) or less |

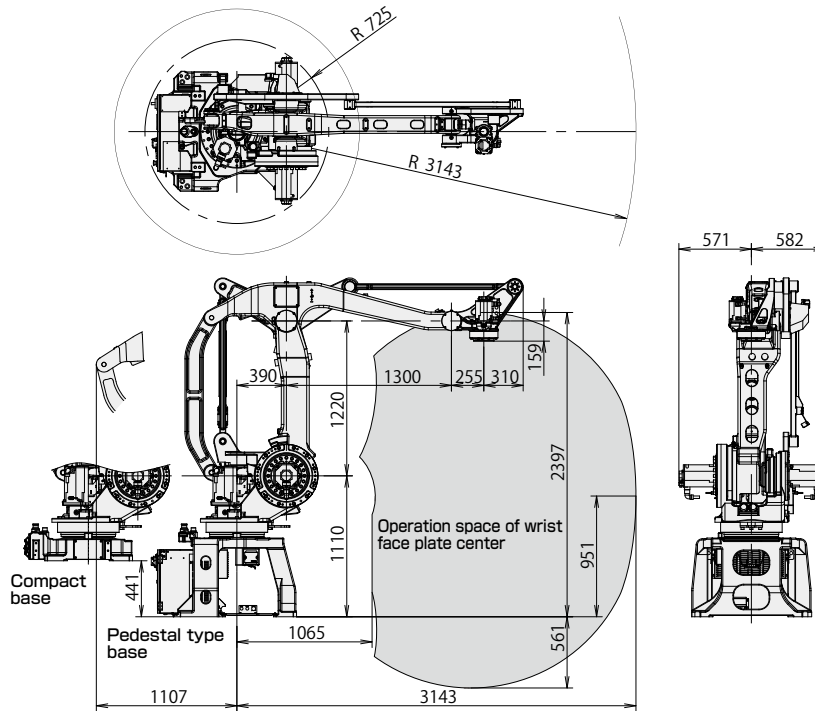
Note 1) During short distance motions, the axis speed may not reach the maximum value stated.

Note 2) Max. payload capacity at wrist are changed by wrist load.

Note 3) Compliant with ISO 9283.

Note 4) Controller mass (120kg) is not included.

M-410iC/185, /315



Specifications

| Model | | M-410iC/185 | M-410iC/315 |
|---|------------------------|--|--|
| Type | | Articulated Type | |
| Controlled axes | | 4 axes (J1,J2,J3,J4) | |
| Reach | | 3143 mm | |
| Installation | | Floor | |
| Motion range (Maximum speed) (Note 1) | J1 axis rotation | 360° (140°/s) 6.28 rad (2.44 rad/s) | 360° (90°/s) 6.28 rad (1.57 rad/s) |
| | J2 axis rotation | 144° (140°/s) 2.51 rad (2.44 rad/s) | 144° (100°/s) 2.51 rad (1.75 rad/s) |
| | J3 axis rotation | 136° (140°/s) 2.37 rad (2.44 rad/s) | 136° (110°/s) 2.37 rad (1.92 rad/s) |
| | J4 axis wrist rotation | 720° (305°/s) 12.57 rad (5.32 rad/s) | 720° (195°/s) 12.57 rad (3.40 rad/s) |
| Max. load capacity at wrist | | 185 kg | 315 kg |
| Max. load capacity at J2 base | | 550 kg | |
| Max. load capacity at J3 arm (Note 2) | | 30 kg | |
| Allowable load inertia at wrist | | 88 kg·m ² 898 kgf·cm·s ² | 155 kg·m ² 1580 kgf·cm·s ² |
| Drive method | | Electric servo drive by AC servo motor | |
| Repeatability (Note 3) | | ± 0.05 mm | |
| Mass | Pedestal type | 1600 kg (Note 4) | |
| | No pedestal | 1330 kg (Note 5) | |
| Installation environment | | Ambient temperature : 0 to 45°C Ambient humidity : Normally 75%RH or less (No dew, nor frost allowed) Short term Max. 95%RH or less (within one month) Vibration acceleration : 4.9 m/s ² (0.5G) or less | |

Note 1) During short distance motions, the axis speed may not reach the maximum value stated.

Note 2) Max. payload capacity at wrist are changed by wrist load.

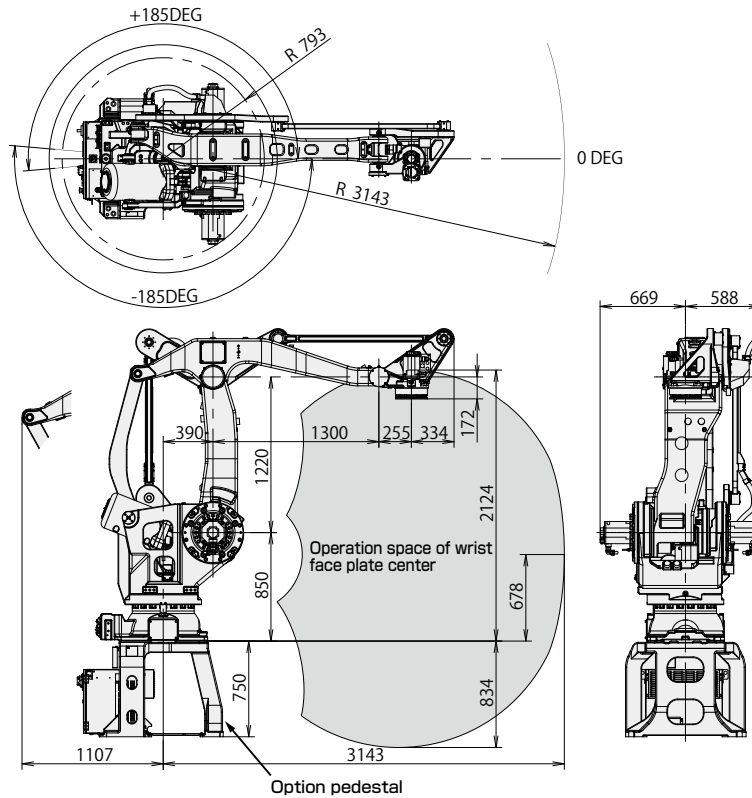
Note 3) Compliant with ISO 9283.

Note 4) Controller mass (120kg) is included.

Note 5) Controller mass (120kg) is not included.

Operating Space

M-410iC/500



Specifications

| Model | | M-410iC/500 |
|---|------------------------|--|
| Type | | Articulated Type |
| Controlled axes | | 4 axes (J1,J2,J3,J4) |
| Reach | | 3143 mm |
| Installation | | Floor |
| Motion range (Maximum speed) (Note 1) | J1 axis rotation | 370° (85°/s) 6.46 rad (1.48 rad/s) |
| | J2 axis rotation | 144° (85°/s) 2.51 rad (1.48 rad/s) |
| | J3 axis rotation | 136° (85°/s) 2.37 rad (1.48 rad/s) |
| | J4 axis wrist rotation | 720° (200°/s) 12.57 rad (3.49 rad/s) |
| Max. load capacity at wrist | | 500 kg |
| Max. load capacity at J2 base | | 550 kg |
| Max. load capacity at J3 arm (Note 2) | | 30 kg |
| Allowable load inertia at wrist | | 250 kg·m ² 2550 kgf·cm·s ² |
| Drive method | | Electric servo drive by AC servo motor |
| Repeatability (Note 3) | | ± 0.05 mm |
| Mass | Pedestal type | 2410 kg (Note 4) |
| | No pedestal | 1910 kg (Note 5) |
| Installation environment | | Ambient temperature : 0 to 45°C Ambient humidity : Normally 75%RH or less (No dew, nor frost allowed) Short term Max. 95%RH or less (within one month) Vibration acceleration : 4.9 m/s ² (0.5G) or less |

Note 1) During short distance motions, the axis speed may not reach the maximum value stated.

Note 2) Max. payload capacity at wrist are changed by wrist load.

Note 3) Compliant with ISO 9283.

Note 4) Controller mass (120kg) is included.

Note 5) Controller mass (120kg) is not included.

FANUC CORPORATION

Headquarters Oshino-mura, Yamanashi 401-0597, Japan
Phone: 81-555-84-5555 Fax: 81-555-84-5512 <http://www.fanuc.co.jp>

● Overseas Affiliated Companies
FANUC America Corporation
FANUC Europe Corporation, S.A.
SHANGHAI-FANUC Robotics CO., LTD.
KOREA FANUC CORPORATION
TAIWAN FANUC CORPORATION
FANUC INDIA PRIVATE LIMITED
FANUC SINGAPORE PTE. LTD.
FANUC THAI LIMITED
FANUC MECHATRONICS (MALAYSIA) SDN. BHD.

PT. FANUC INDONESIA
FANUC OCEANIA PTY. LIMITED
FANUC SOUTH AFRICA (PROPRIETARY) LIMITED

3900 West Hamlin Road, Rochester Hills, MI 48309-3253, U.S.A.
Zone Industrielle, L-6468 Echternach, Grand-Duché de Luxembourg
No. 1500 Fuliian Road, Baoshan Area, Shanghai, China
101, Wanam-ro(st), Seongsan-gu, Changwon-si, Gyeongsangnam-do, 642-290 Republic of Korea
No.10, 16th Road, Taichung Industrial Park, Taichung, Taiwan
41-A, Electronics City, Bangalore, 560 100, India
No.1 Teban Gardens Crescent, Singapore 608919, Singapore
1301 Pattanakarn Road, Kwaeng Suanluang, Khet Suanluang, Bangkok 10250 Thailand
No.32, Jalan Pengacara U1/48, Temasya Industrial Park, Section U1, Glenmarie, 40150 Shah Alam, Selangor Darul Ehsan, Malaysia
JL. Boulevard Bukit Gading Raya Blok R, Jakarta 14240 Indonesia
10 Healey Circuit, Huntingwood, NSW 2148, Australia
17 Loper Ave. Aeroport Industrial Ests. Spartan Ext.2 P.O.Box 219, Isando 1600, Republic of South Africa

Phone: 1-248-377-7000 Fax: 1-855-774-7051
Phone: 352-727777-1 Fax: 352-727777-403
Phone: 86-21-5032-7700 Fax: 86-21-5032-7711
Phone: 82-55-278-1200 Fax: 82-55-284-9826
Phone: 886-4-2359-0522 Fax: 886-4-2359-0771
Phone: 91-80-2852-0057 Fax: 91-80-2852-0051
Phone: 65-6567-8566 Fax: 65-6566-5937
Phone: 66-2-714-6111 Fax: 66-2-714-6120

Phone: 60-3-7628-0110 Fax: 60-3-7628-0220
Phone: 62-21-4584-7285 Fax: 62-21-4584-7288
Phone: 61-2-8822-4600 Fax: 61-2-8822-4666
Phone: 27-11-392-3610 Fax: 27-11-392-3615

● All specifications are subject to change without notice.
● No part of this catalog may be reproduced in any form.
● The products in this catalog are controlled based on Japan's "Foreign Exchange and Foreign Trade Law". The export from Japan may be subject to an export license by the government of Japan. Further, re-export to another country may be subject to the license of the government of the country from where the product is re-exported. Furthermore, the product may also be controlled by re-export regulations of the United States government. Should you wish to export or re-export these products, please contact FANUC for advice.